

1x NX Leaf Spring

No-load height : 3.3 mm ± 0.3 mm
 Post installation height : < 1.5mm

Note that CAD model does not include curvature / bend of spring

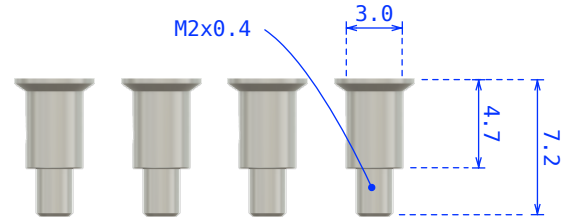
0.75±0.15



4x Flat Head Shoulder Screws
 Drive: Torx T6



M2x0.4



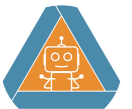
MATERIAL SPECIFICATION

Spring : SUS 301 with a hardness of 3/4H (HV395+/-20)
 Screws : SUS 304 with a minimum hardness of HV200

Capable Robot Components

Part Name
NX Leaf Spring Kit

Revision
CR4V1X



Drawing Name
 Reference Drawing

Date 2021-10-28

Sheet 1/1